

Powerful Features and Performance in a SIP based DECT Enterprise Mobility Solution

Employing superior DECT technology, the SIP-DECT Solution from Aastra offers superior levels of interference-free performance, security and reliability in a cordless SIP telephone system. This scalable, enterprise-grade, mobility solution allows users to take the features and voice quality of their desk telephone with them throughout their office environment or related branch offices serviced by the same Corporate network. DECT technology virtually eliminates issues of dropped calls, interference, security and range by employing IP DECT access points that seamlessly “handoff” calls and enable roaming. This system is ideal for any single or multi-location business, retail or institutional setting that requires mobile employees to be available to take or receive calls at any time.



Key Features and Benefits:

» Seamless Mobility

DECT technology offers reliable, resilient, high quality, secure voice access throughout a building or across a Corporate network with full roaming support. Handsets act as normal company extensions, allowing staff to be reached in both headquarters and branch office locations. Employing advanced authentication/encryption technology, DECT is constantly monitoring transmissions and will automatically adjust channels to avoid possible interference.

» Feature Rich Handsets

The SIP-DECT 142 handset is a powerful tool for business communication on the go. Featuring a 5-line illuminated display with two softkeys for feature access, illuminated keypad, a variety of informational status displays, SOS key for an emergency speed dial number, caller/directory and redial lists, the handset also offers hands free operation, built in speaker and headset jack

» Scalability and Resiliency

The Aastra SIP-DECT system, using DECT 142 handsets and RFP 32 IP DECT access points, can grow as your business expands. By simply adding additional handsets and access points, the Aastra SIP-DECT solution can easily expand to meet changing business requirements. Up to 512 handsets can be deployed using up to 256 IP access points. Backup resiliency can be configured into any system deploying two or more IP access points to ensure reliability.

» Simple Deployment

Aastra's SIP-DECT solution can be easily deployed in most open-standard IP environments including; Hosted or Premised based using a SIP based IP-PBX, Hybrid PBX or Open Source PBX. The solution requires limited engineering planning and is managed by OpenMobility Manager (OMM) software and provisioned on the SIP based infrastructure as simple SIP Extensions. OMM is installed and runs on one of the access points, with a secondary access point configured as a backup for resiliency. DECTNet Monitor software provides additional diagnostic and monitoring capability to ensure optimum performance of the SIP-DECT solution.

Feature Highlights*

- » Handsfree operation
- » 5 line illuminated display
- » Illuminated keypad
- » Call Forward – always, busy, no answer
- » Call Transfer - blind, consultation
- » Call Hold with visual indication, reminder tones
- » Call Logs – dialed, missed, received
- » Personal Directory – 100 entries on transferable memory card
- » SOS Emergency speed dial key
- » Redial list
- » Message Waiting indication
- » Caller ID with Name
- » Status Indicators – Ringer on/off, signal strength, on/off hook, alarm, battery life, envelope, key lock
- » 30 Ring Tones
- » Vibration alarm
- » Key lock
- » Multiple language support
- » Country specific tones

* Feature availability dependant on IP telephony systems



DECT 142 HANDSET

Display (LCD)

- » 4 lines of 16 characters
- » 3 line text, 1 line soft keys (upper and lower case, 96 x 60 pixels)
- » Illuminated display and keypad
- » Status indicators-Ringer off, signal strength, on/off hook, alarm, battery life, envelope, key lock
- » Time Display
- » User Name & Number
- » Network Subscription
- » Display Contrast Adjustment

Physical

- » Integrated Antenna
- » Size (approx.) 146mm x 53mm x 28mm
- » Weight 138 grams (inc. batteries)
- » 2.5mm headset jack

Powering

- » Batteries: 3 AAA 750 mAh NiMH
- » Input: 100-120V 60 Hz 100mA.
Output: 7.5V DC 150mA
- » Low Battery Warning
- » Silent Charging
- » Desk Charger Power Adaptor
- » Up to - 12 hours talk time, 120 hours stand-by, 5 - 6 hours recharge time

Performance

- » Frequency 1.92 – 1.93 GHz.
- » 300,000 sq. ft. coverage area (open space)
- » Coverage Warning
- » Site Survey Mode
- » Auto call generation/answer mode

DECT Handset Call Features

- » Call Forward: always, busy, no answer (phone side)
- » Call logs: dialed, missed, received
- » Personal directory (local only) 100 entries
- » Access to centralized directory
- » Redial list
- » Call Transfer: blind, consultation
- » Call waiting
- » MWI
- » Caller ID with name
- » DND
- » Call Hold with visual indication, reminder tones
- » Missed call indicator
- » Speed dial quick call key assignment
- » Call blocking/filtering
- » 30 ring tones
- » Single and Continuous Ring
- » Loud Speaker (hands-free mode)
- » Speaker / Earpiece Volume Adjustment
- » Ringer Volume Adjustment
- » Vibrate Mode
- » Keyboard lock
- » Alarm/Reminder
- » Microphone Mute
- » Auto-answer (for headset use)
- » Auto answer pickup from charger
- » Country specific tones

- » Languages English, French, German, Italian, Spanish, Dutch, Portuguese
- » Site Survey mode with automated test call/answer modes

Access Points Features

Voice Mobility

- » Synchronization via air interface
- » Authentication/Encryption of base and handset
- » Operating states monitoring
- » Connection via Ethernet 10/100 BaseT
- » IPv4, Power over Ethernet (IEEE 802.3af)
- » Up to 8 simultaneous voice conversations and 12 Signaling Channels
- » Endpoint for media streams
- » Packet handling via RTP/RTCP
- » Network Boot, SW-Download / Update
- » DHCP support
- » Codecs G.711, G.723, G.729AB
- » QoS via DiffServ and ToS-Flag
- » Jitter compensation, Echo Cancellation
- » Voice Activity Detection with comfort noise

Service and Installation

- » Centralized configuration via WEB-configurator of the OpenMobility Manager
- » OpenMobility Manager resiliency
- » DECTNet Monitor tool for real time monitoring and diagnostics
- » System log book
- » Central cluster administration
- » LEDs for operation status indication

RFP 32 Indoor Access Point Physical Features

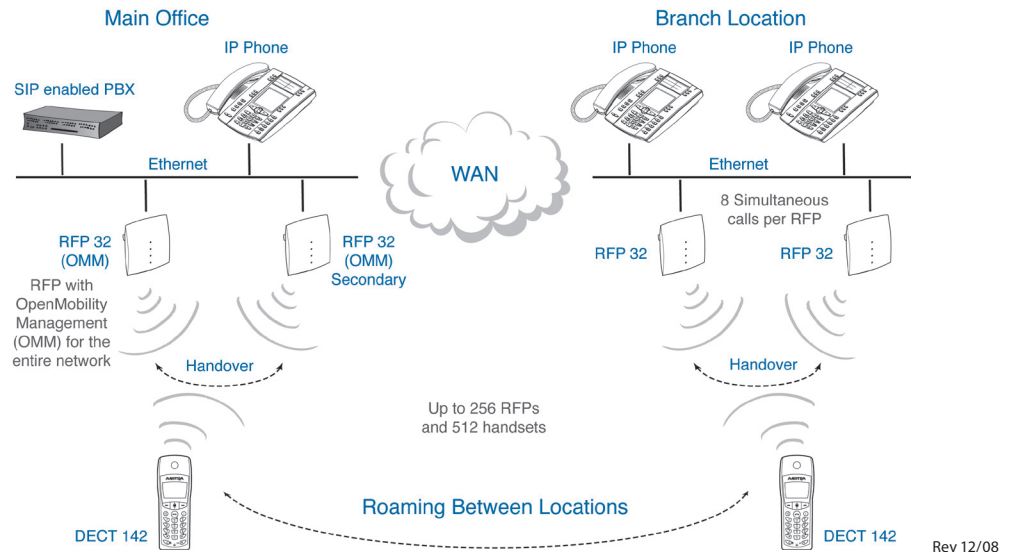
- » Power supply:
 - Power over Ethernet (IEEE 802.3af, Class 0), or optional AC adapter
- » Operating Conditions:
 - Temperature: 23°F to 113°F (-5°C to 45°C)
 - Relative humidity: 5 to 95% (non-condensing)



- » Storage temperature: -40°F to 158°F (-40°C to +70°C)
- » Current consumption: 120mA
- » Power: 6W
- » Type of ingress protection: IP 20
- » Wall mountable
- » 3 external LEDs for operation status indication
- » Weight: 0.91 lb (417 g), without AC adapter
- » Dimensions: (W x H x D): 5.94" x 3.97" x 1.25" (151 x 101 x 32mm)

RFP 34 Outdoor Access Point Physical features

- » Power supply:
 - Power over Ethernet (IEEE 802.3af, Class 0)
- » Operating Conditions
 - Temperature: -13°F to 131°F (-25°C to +55°C)
 - Relative humidity: 5 to 95% (non-condensing)
- » Storage temperature: 23°F to 113°F (-5°C to 45°C)
- » Current consumption: 120mA
- » Power: 6W
- » Type of ingress protection: IP 65
- » Wall and mast mountable
- » 3 internal LEDs for operation status indication
- » Weight: 2.13 lb (970 g)
- » Dimensions: (W x H x D): 9.44" x 10.23" x 2.36" (240 x 260 x 60mm)



Rev 12/08

COPYRIGHT (C) 2008 AAstra TECHNOLOGIES LTD. ALL RIGHTS RESERVED. INFORMATION IN THIS DOCUMENT IS SUBJECT TO CHANGE WITHOUT NOTICE. AAstra TELECOM ASSUMES NO RESPONSIBILITY FOR ANY ERRORS THAT MAY APPEAR IN THIS DOCUMENT. PRODUCT CAPABILITIES DESCRIBED IN THIS DOCUMENT PERTAIN SOLELY TO AAstra TELECOM'S MARKETING ACTIVITIES IN THE U.S AND CANADA. AVAILABILITY IN OTHER MARKETS MAY VARY.

AAstra TELECOM
155 SNOW BLVD.,
CONCORD, ONTARIO, CANADA, L4K 4N9
SALES@AAstra.COM • WWW.AAstratelecom.COM